



## UPS 25-120 180

, PES/PP.

1-

: -25 .. 95 °C  
 60 °C  
 983.2 / ³

TF

95  
 : AAA

EN-JL1030  
 ASTM 30 B  
 , PES/PP

.T

80 0C: 80 °C

10  
 G 1 1/2  
 PN 10  
 180

C : 6  
1: 120  
2: 180  
: 235  
: 50 Hz  
: 1 x 230 V  
1: 0.53 A  
2: 0.78 A  
3: 1.02 A  
- : 6  
(IEC 34-5): X2D  
(IEC 85): F  
: 4.4  
: 4.6  
: 0.006 <sup>3</sup>

1 UPS 25-120 180



, PES/PP.

1-

: -25 .. 95 °C  
 60 °C  
 983.2 / 3

TF

95  
 : AAA

EN-JL1030  
 ASTM 30 B  
 , PES/PP

80 0C: 80 °C

10  
 G 1 1/2  
 PN 10  
 180

C

6

1: 120

2: 180

: 235

: 50 Hz

: 1 x 230 V

1: 0.53 A

2: 0.78 A

3: 1.02 A

- : 6

(IEC 34-5): X2D

(IEC 85): F

:

:

:

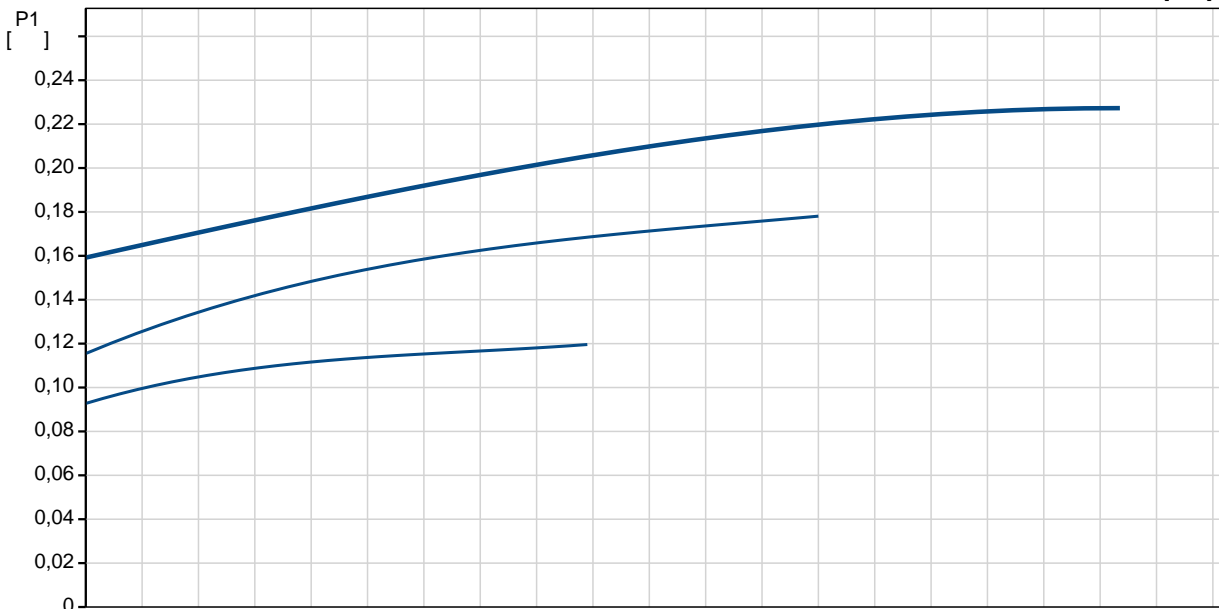
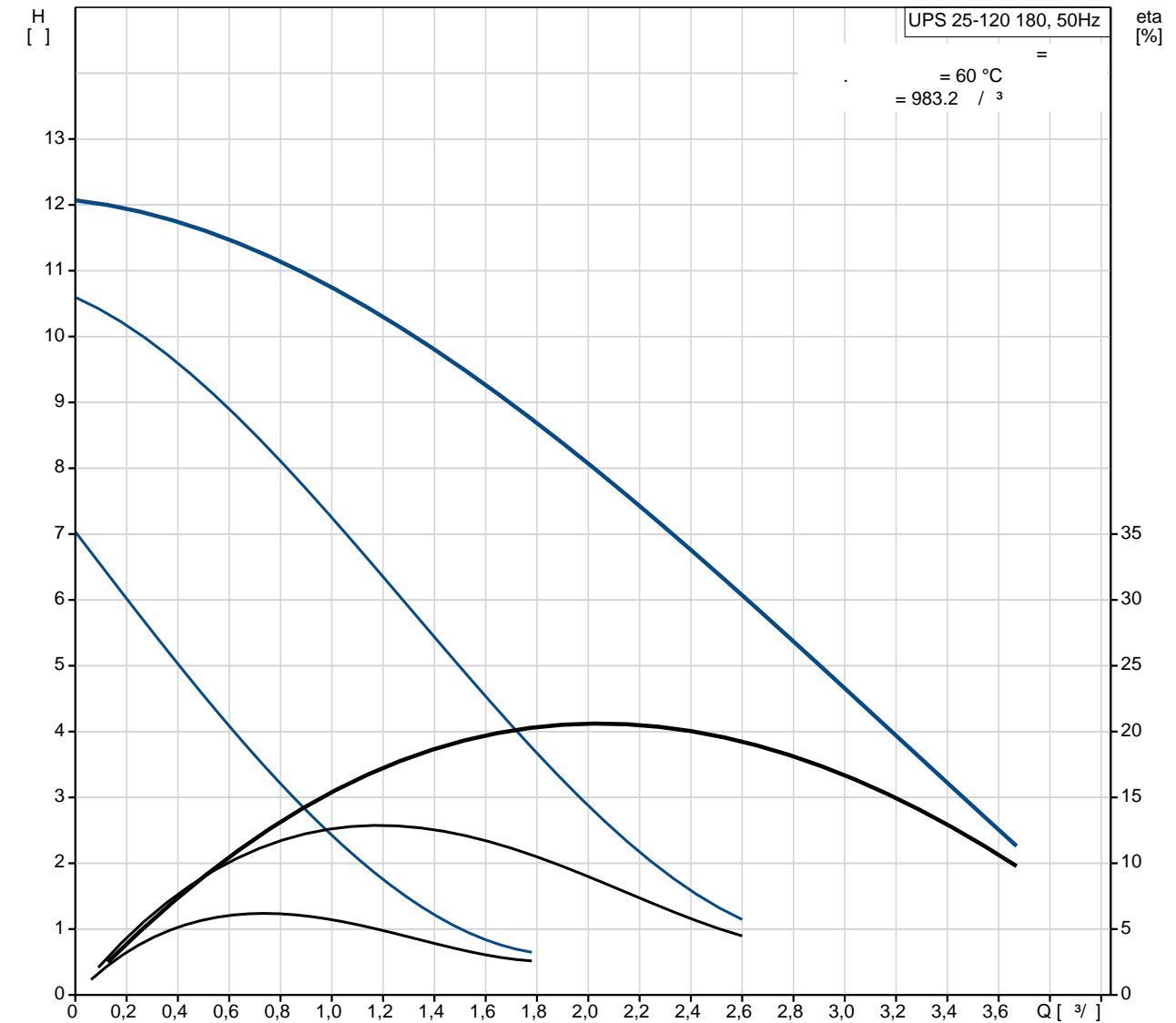
:

4.4

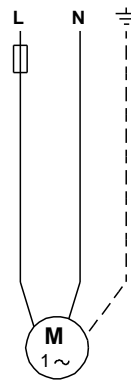
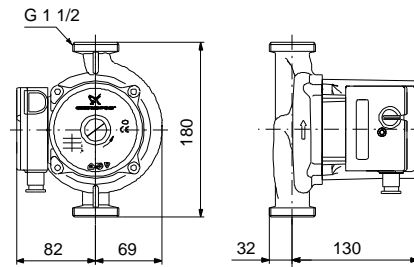
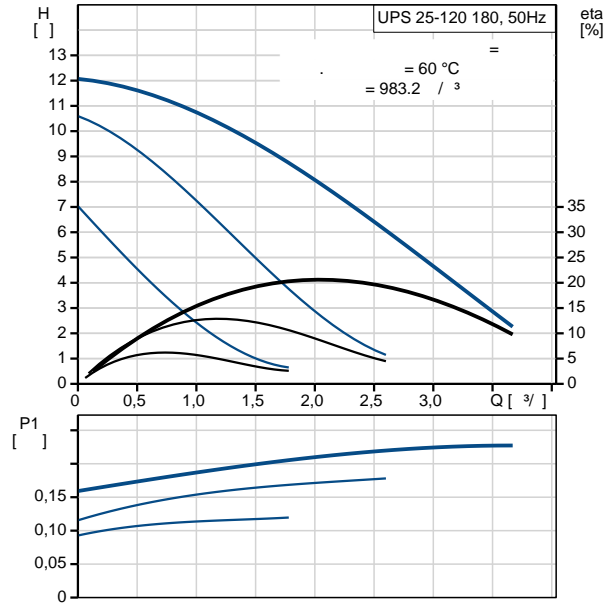
4.6

0.006 <sup>3</sup>

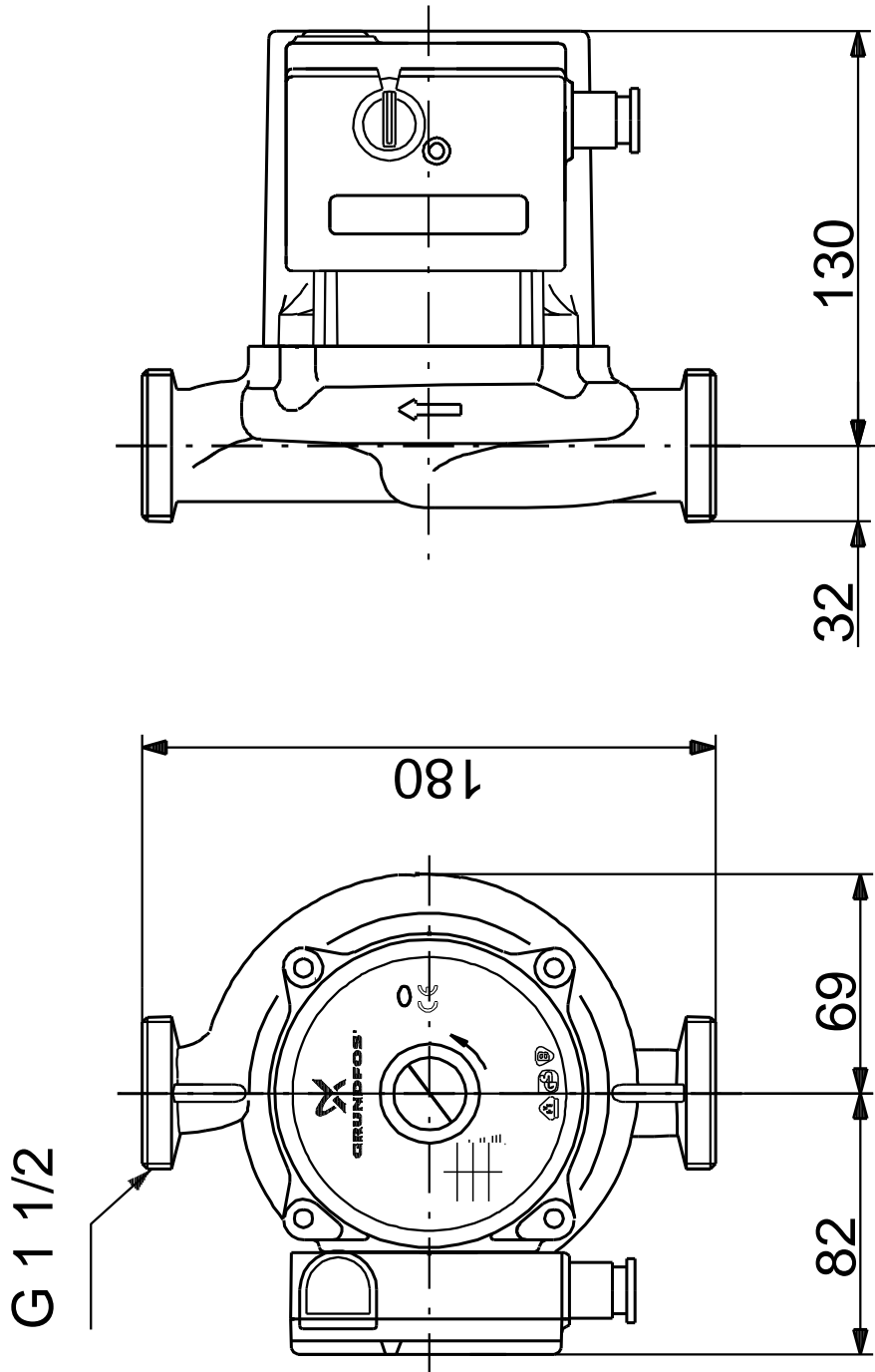
## UPS 25-120 180 50



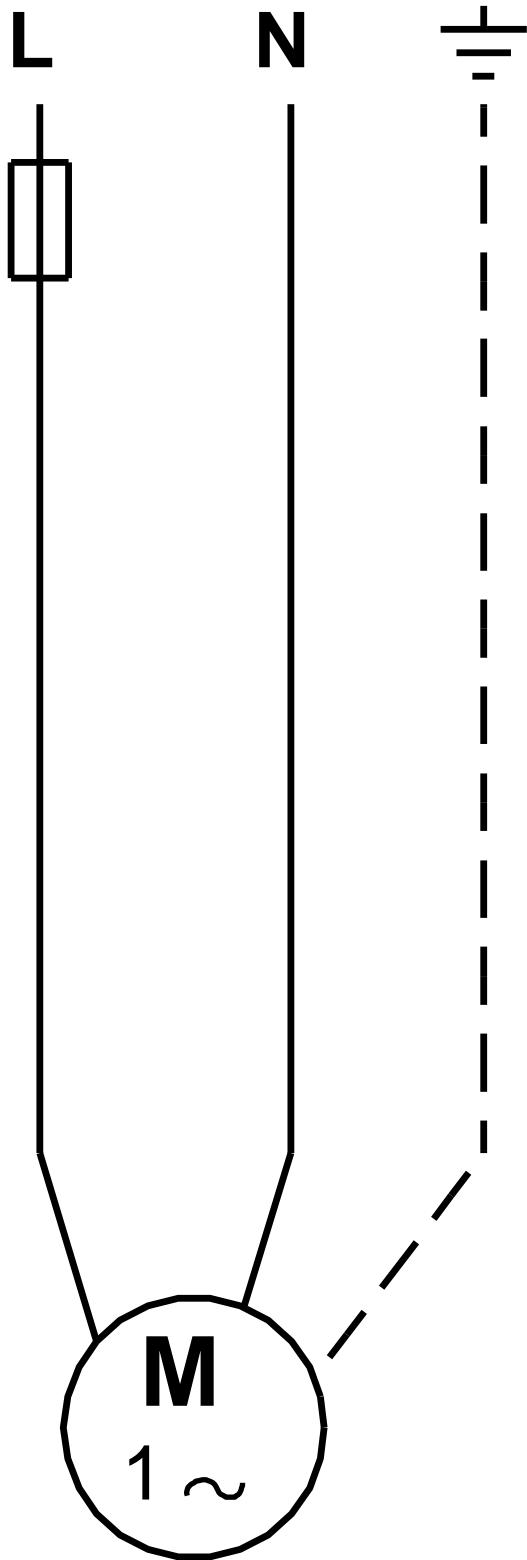
UPS 25-120 180	
EAN	
TF	3 120 95 AAA
	EN-JL1030 ASTM 30 B , PES/PP
80 OC:	80 °C
	10 G 1 1/2 PN 10 180
	-25 .. 95 °C 60 °C 983.2 / <sup>3</sup>
C	6 1: 120 2: 180 235 50 Hz 1 x 230 V 1: 0.53 A 2: 0.78 A 3: 1.02 A 6 (IEC 34-5): X2D (IEC 85): F CONTACT
	9H
	4.4 4.6 0.006 <sup>3</sup>



**UPS 25-120 180 50**



**UPS 25-120 180 50**



! [ ], .