

1 UPS 25-100 180



: 95906480

3-

- *
- *
- *
- *
- *
- *

, PES/PP.

1-

: -25 .. 110 °C
 20 °C
 998.2 / 3

TF

110
 : CE

EN-JL1030
 ASTM 30 B
 , PES/PP

.T : - 80 0C: 40 °C

10
 G 1 1/2
 PN 10
 180

C

9.5

1: 280
 2: 340
 3: 345

: 50 Hz
 : 1 x 230 V

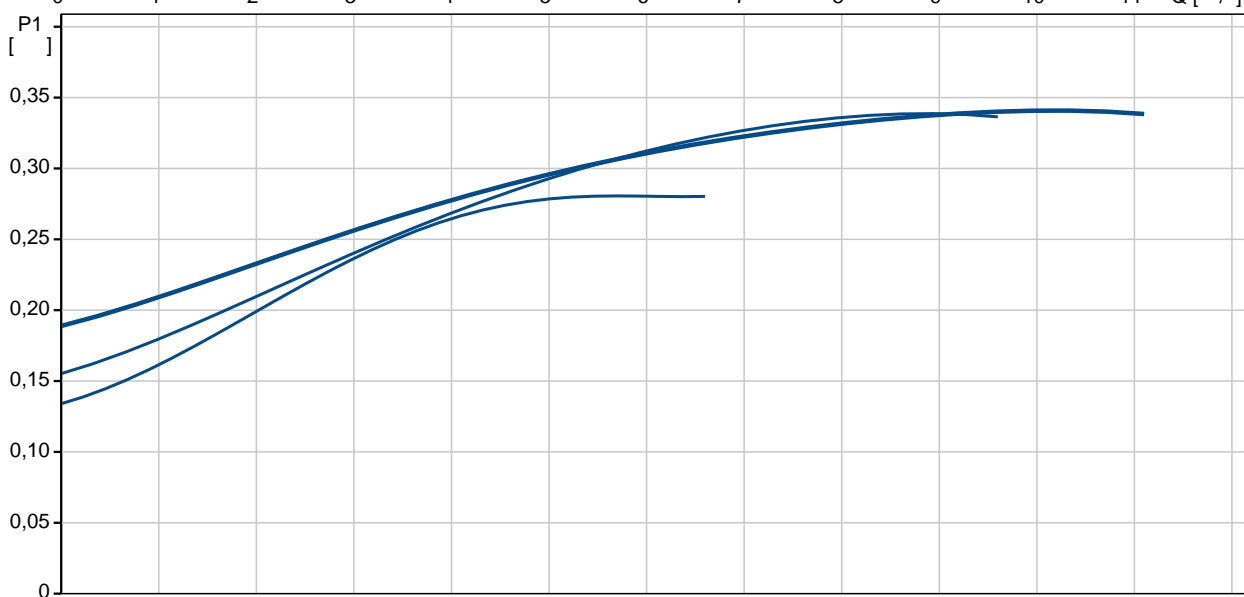
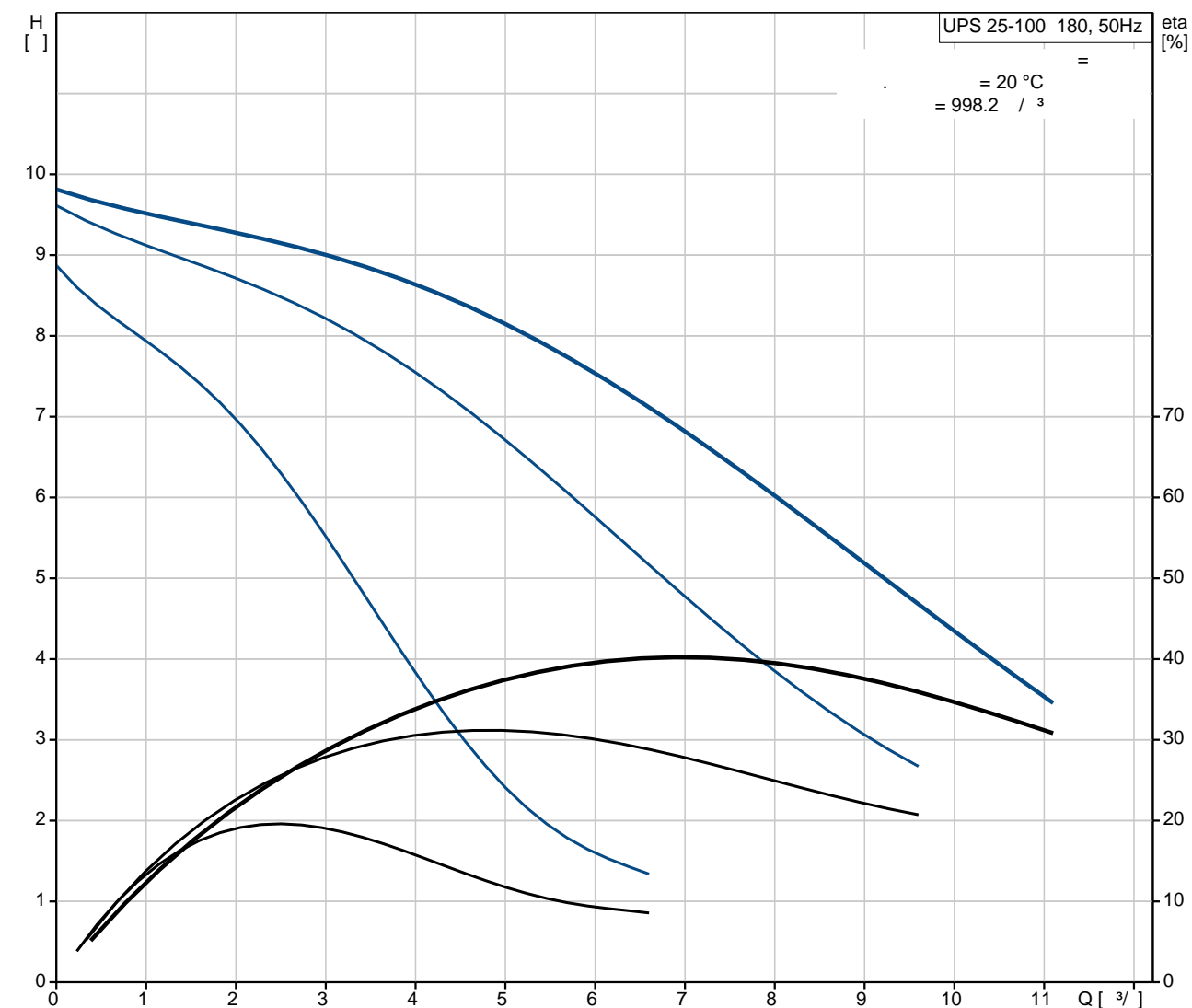
1: 1.3 A
 2: 1.5 A

3: 1.52 A
 - : 9.5

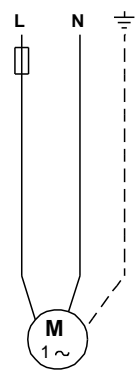
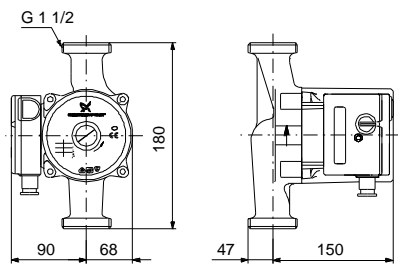
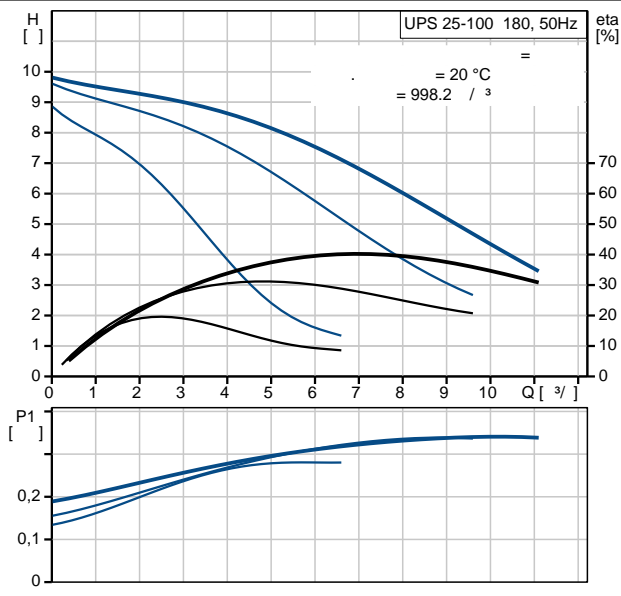
(IEC 34-5): X4D
 (IEC 85): H

:
 : 6.3
 : 6.8
 : 0.012 3

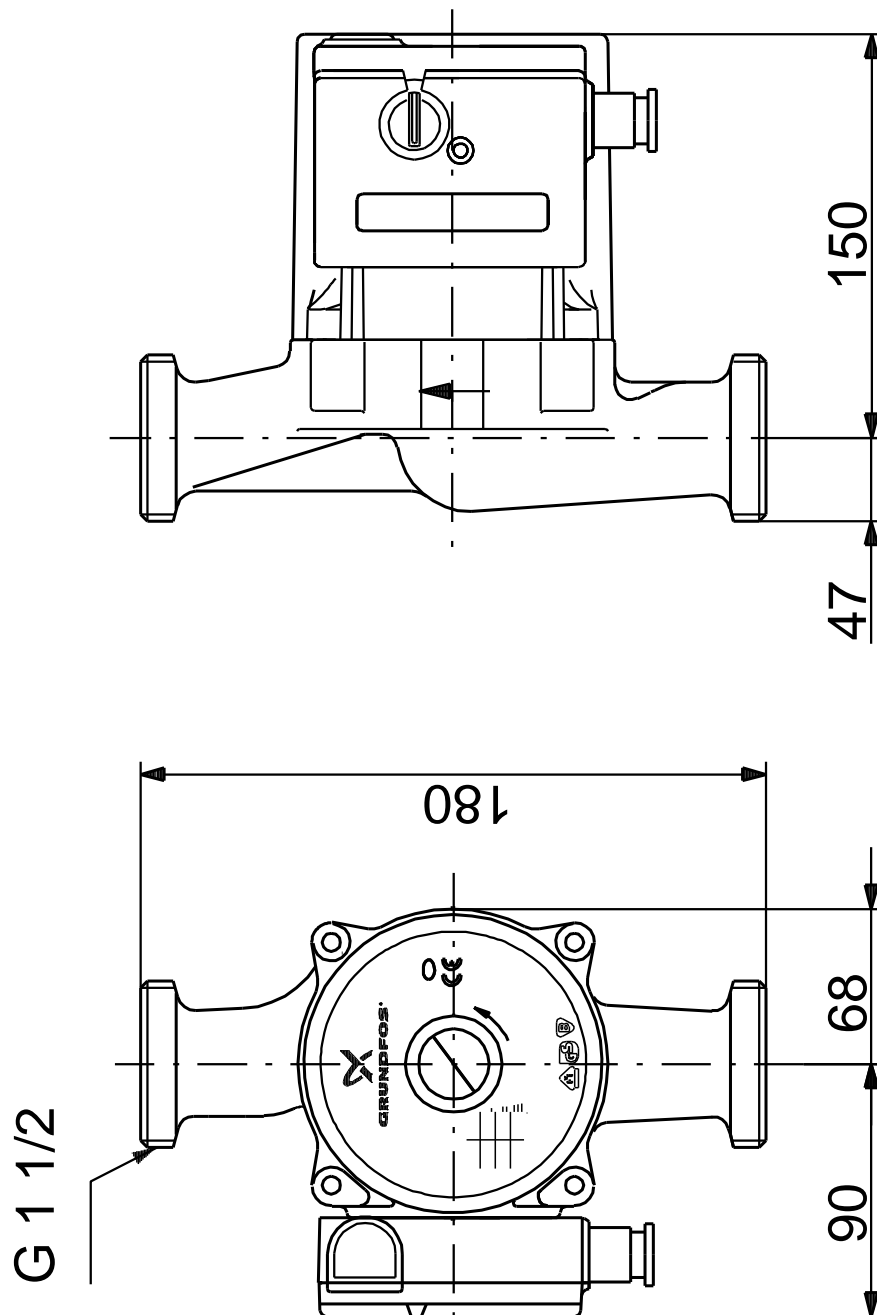
95906480 UPS 25-100 180 50



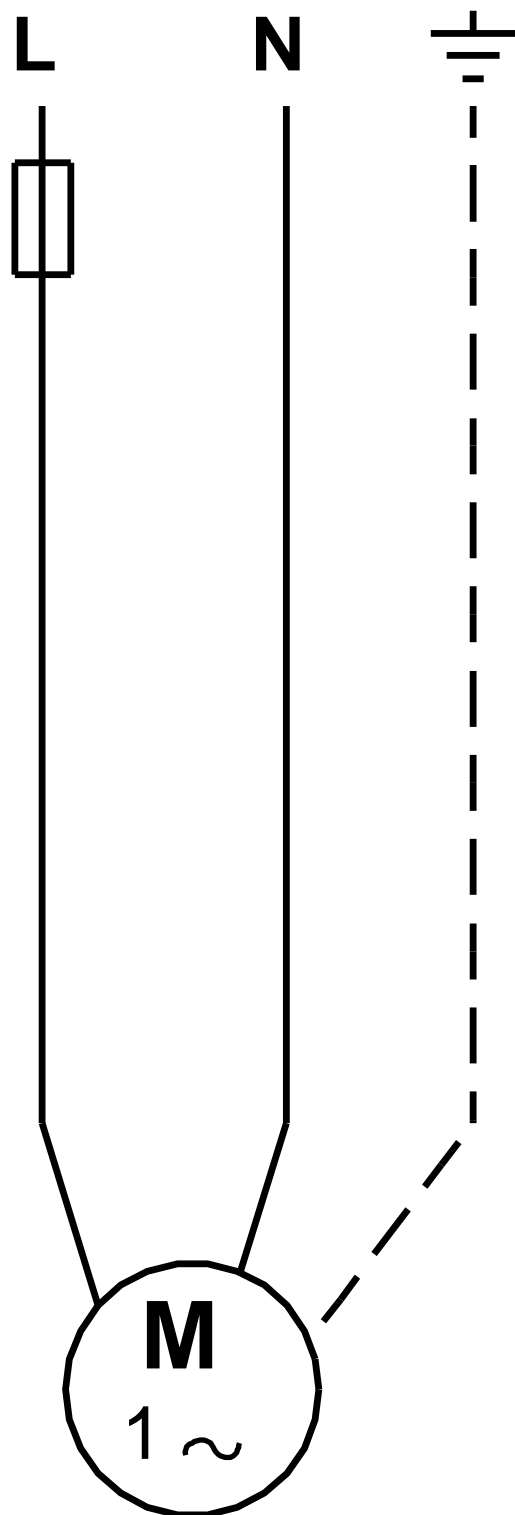
		UPS 25-100 180
		95906480
EAN		5700311099766
		3
		100
TF		110
		CE
		EN-JL1030
		ASTM 30 B
		, PES/PP
		40 °C
80 OC:		10
		G 1 1/2
		PN 10
		180
		-25 .. 110 °C
		20 °C
		998.2 / ³
C		9.5
		1: 280
		2: 340
		3: 345
		50 Hz
		1 x 230 V
		1: 1.3 A
		2: 1.5 A
		3: 1.52 A
		9.5
		(IEC 34-5): X4D
		(IEC 85): H
		Contact
		9H
		6.3
		6.8
		0.012 3



95906480 UPS 25-100 180 50



95906480 UPS 25-100 180 50



! []